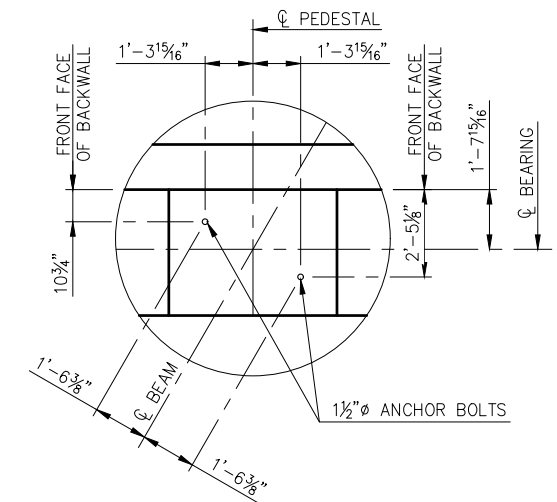
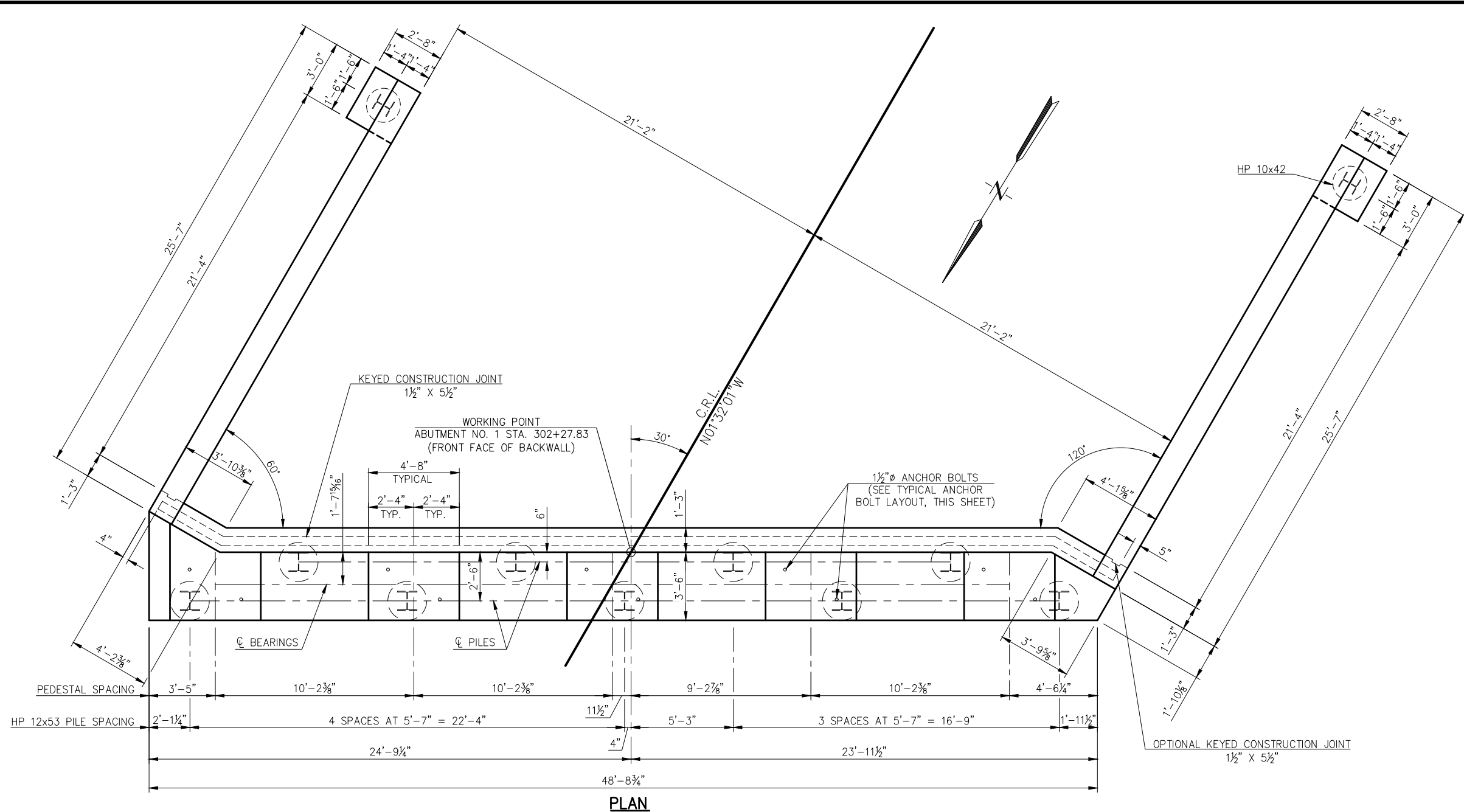
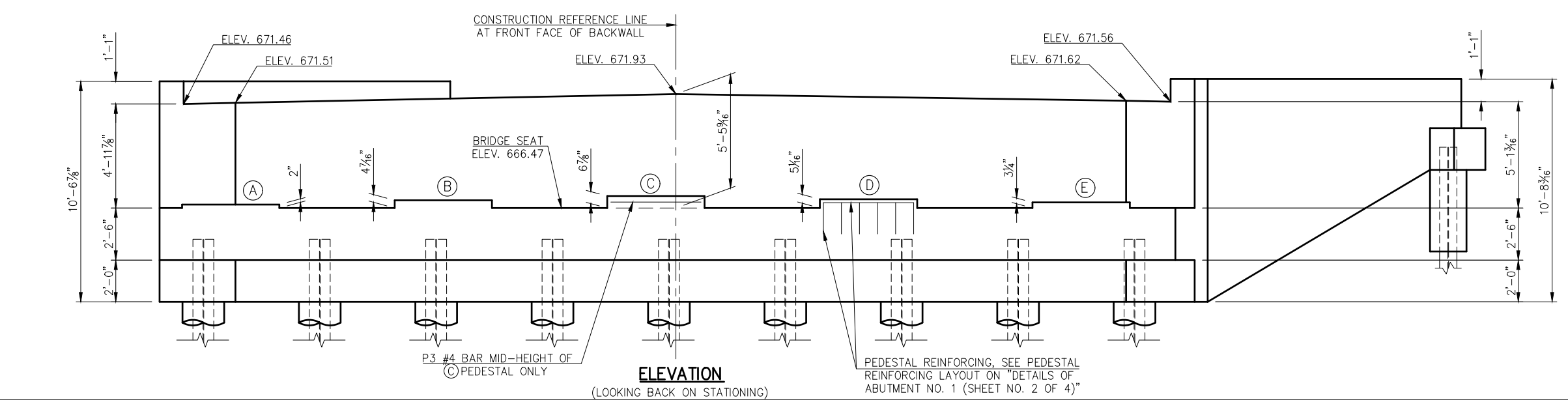


REVISIONS		
REV. NO.	DESCRIPTION	DATE



TYPICAL ANCHOR BOLT LAYOUT

PEDESTAL ELEVATIONS	
PEDESTAL	ELEVATION
(A)	666.63
(B)	666.84
(C)	667.04
(D)	666.89
(E)	666.74



QUANTITIES - ABUTMENT NO. 1		
ITEM	UNIT	TOTAL
SUBSTRUCTURE EXCAVATION COMMON	C.Y.	125.00
CLSM BACKFILL	C.Y.	144.00
CLASS A CONCRETE	C.Y.	58.10
EPOXY COATED REINFORCING STEEL	LB.	8,300.00
PILES, FURNISHED (HP 10X42)	L.F.	42.00
PILES, FURNISHED (HP 12X53)	L.F.	189.00
PILES, DRIVEN (HP 10X42)	L.F.	42.00
PILES, DRIVEN (HP 12X53)	L.F.	189.00
(PL) PILOT HOLES	L.F.	165.00
WATER REPELLENT (VISUALLY INSPECTED)	S.Y.	66.00
6" PERFORATED PIPE UNDERDRAIN ROUND	L.F.	48.00
6" NON-PERF. PIPE UNDERDRAIN RND.	L.F.	30.00

DESIGN	MBS	5/14	SH-28 OVER SALT CREEK BRIDGE "A"	NOWATA COUNTY
DETAIL	SLP	5/14		
CHECK	MBS	3/15		
GUY ENGINEERING SERVICES, INC.				
DETAILS OF ABUTMENT NO. 1 (SHEET NO. 1 OF 4)			STATE JOB PIECE NO. 28857(04)	SHEET NO. B008

Monday, July 31, 2017 4:14:12 PM V:\12-716E SH-28 Salt Creek JP.28857\STRUCTURAL\DWG\Salt Creek - ABUTMENTS.dwg